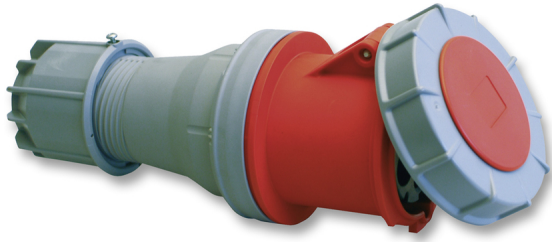


## IP67 FEMALE CONNECTOR



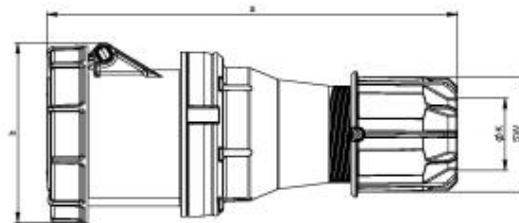
**4100C9W**



3P+G 250vac Female Connector IP67

*Pictures are for reference only*

Globetron product is  approved



Pole	3	4	5
a (mm)	201	207	207
b (mm)	124	124	124
K (mm)	22.5-50	22.5-50	22.5-50
SW (mm)	81	81	81

## RELATED PRODUCTS



**IP67 MALE PLUG**  
4100P9W



**IP67 MALE INLET**  
4100B9W



**IP67 MALE INLET**  
4100I9W

**Globetron Controls Corp.**

Phone: 905-825-1335 - Email: [sales@globetron.com](mailto:sales@globetron.com)

35 Seapark Drive, Unit 3,  
St. Catharines, Ontario L2M 6S5