

# GLOBETRON

Globetron is a dynamic, service oriented company dedicated to exceeding our customers expectations, and we stock a wide range of automation components that reflect the latest advances in technology. To help you complete your projects, Globetron's products are backed with extensive industry experience and in-depth knowledge.

For more information on any of our products please contact us @

**1 (800) 800-4606 | [sales@globetron.com](mailto:sales@globetron.com)**

35 Seapark Drive, Unit 3 St. Catharines, ON L2M 6S5



**IEC309  
Devices**



**Photoelectric  
Sensors**



**Encoders**



**Specialty Proximity  
Sensors**

**Data  
Connectors**



**M8, M12,  
Mini Cordsets**



**Waterproof  
Connectors**



**Timers, Counters,  
Panel Meters**



**Fiber Optic  
Amplifiers**



**Push to Teach  
Sensors**



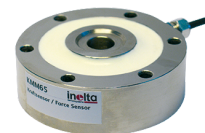
**Temperature  
Controls**



**Inductive  
Ring Sensors**



**Vision  
Sensors**



**Force  
Sensors**



**Infrared Sensor /  
Pyrometer**



**Tower  
Lights**



**Pressure  
Transmitters**



**Ultrasonic  
Sensors**



**Pin & Sleeve  
Connectors**

**PROUDLY SERVING  
THE INDUSTRIAL MARKET  
FOR 35 YEARS!**

**GLOBAL PART SOURCING**  
[www.globetron.com](http://www.globetron.com)



# GLOBETRON

IEC309 Power Connectors, Industrial Plugs, Receptacles and Connectors from 20A to 100A. UL, CSA Certified in the US & Canada. Industrial Component & Global Part Sourcing.

## WE ARE PROUD TO REPRESENT THESE MANUFACTURERS:

**AmeriMation**

Signal Devices, Switches, Enclosures, Sensors, Connectivity, Motor Control.



Wireless Transmission, Industrial Photoelectric Sensors, Infrastructure Sensors, Anti-Collision Sensors.

**Autonics**  
Sensors & Controllers

Photoelectric Sensors, Counters, Timers, Temperature Controllers, Panel Meters, Tach/Line Speed Meters, Display Units, Proximity Switches, Rotary Encoders, Digital Switches.



Sensors for Industrial Automation, Lighting for Inspection & Image Processing, Vision / ID Products and Accessories.



Connectors (Field Attachable & DIN Valve), Distribution Boxes and Cordsets (Mini, M12 & M8).



Incremental Encoders, Absolute Encoders, Encoders for Hazardous Areas.



Displacement Sensors, Force Sensors, Signal Conditioners, Linear Actuators, Pressure Switches, Inclimeters.



Mini, Micro (M12) & Pico (M8) Cordsets, DIN Valve Connectors, Fieldbus Product for Industrial Network Wiring, Distribution Boxes and Field Attachable Connectors.



Ultrasonic Sensors for High Resolution and Long Detection Range. Ultrasonic Sensors with Very Short Minimum Distances.



Inductive Proximity Switches, Inductive Sensor Strips, Sensors (Ring, Inductive Analog, & Flow), Capacitive Proximity Switches, Hot Metal Detectors.



Sensors (Photoelectric, Inductive, Capacitive, Analogue, Contrast, Colour, Background Suppression, & Vision Sensors for Colour, Pattern, & Bar Code Identification).



Sensors (Photoelectric, Laser Analog, Print Mark, Gloss, Colour, & Background Suppression), Inductive Proximity Switches, Fiber Optics, Optical Sensors for Roller Conveyers.

## PROUDLY SERVING THE INDUSTRIAL MARKET FOR 35 YEARS!



1-800-800-4606



[sales@globetron.com](mailto:sales@globetron.com)



[www.globetron.com](http://www.globetron.com)

